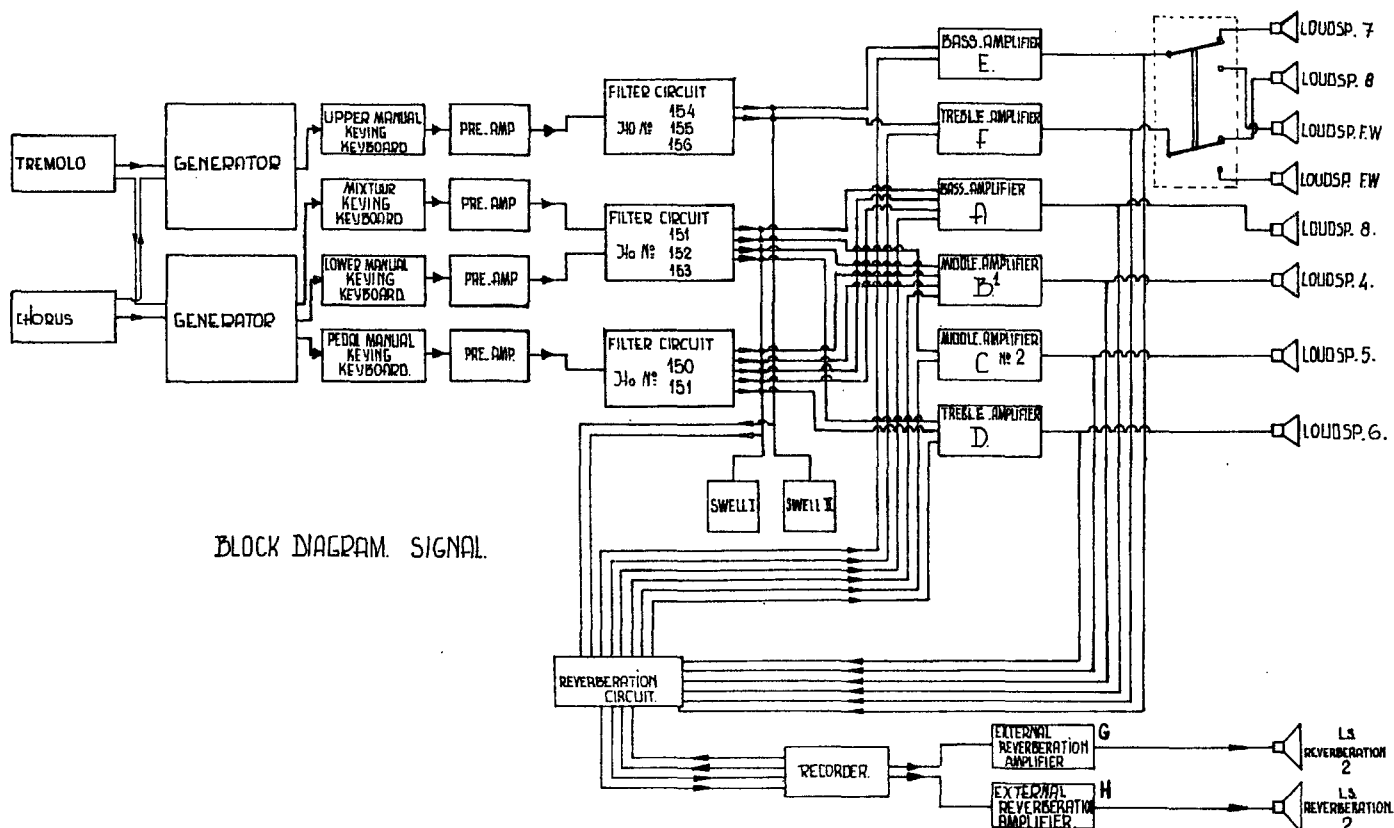
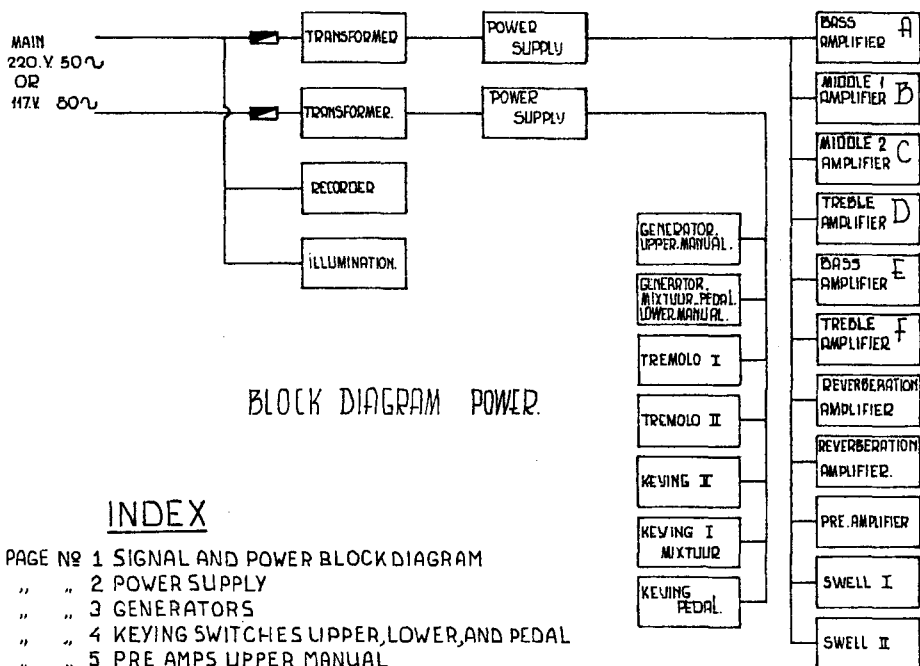


=====
= S C H E M A T I C D I A G R A M S =
= J O H A N N U S =
= K - I I B =
= a l t e r a t i o n s r e s e r v e d =



BLOCK DIAGRAM. SIGNAL.

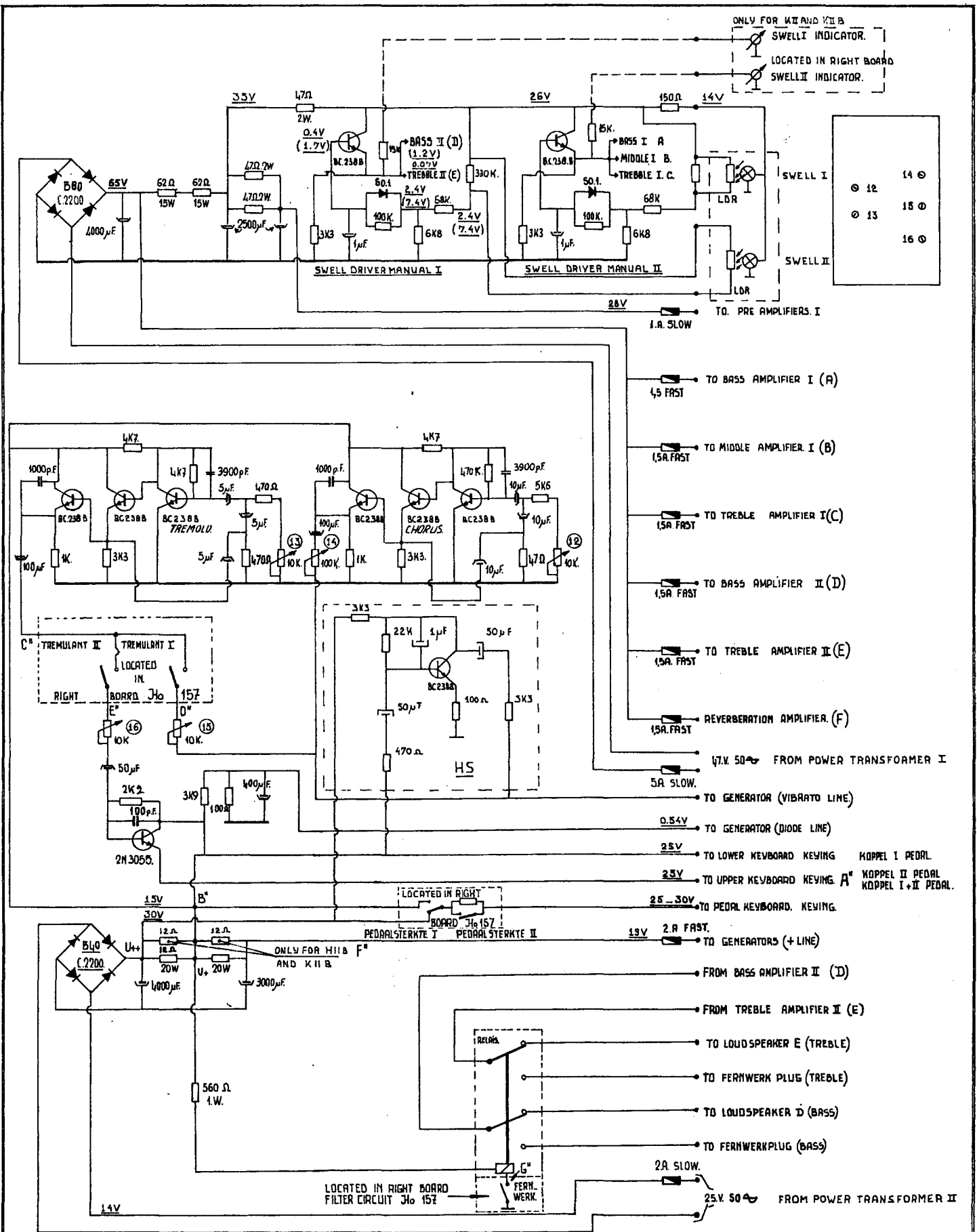


BLOCK DIAGRAM POWER.

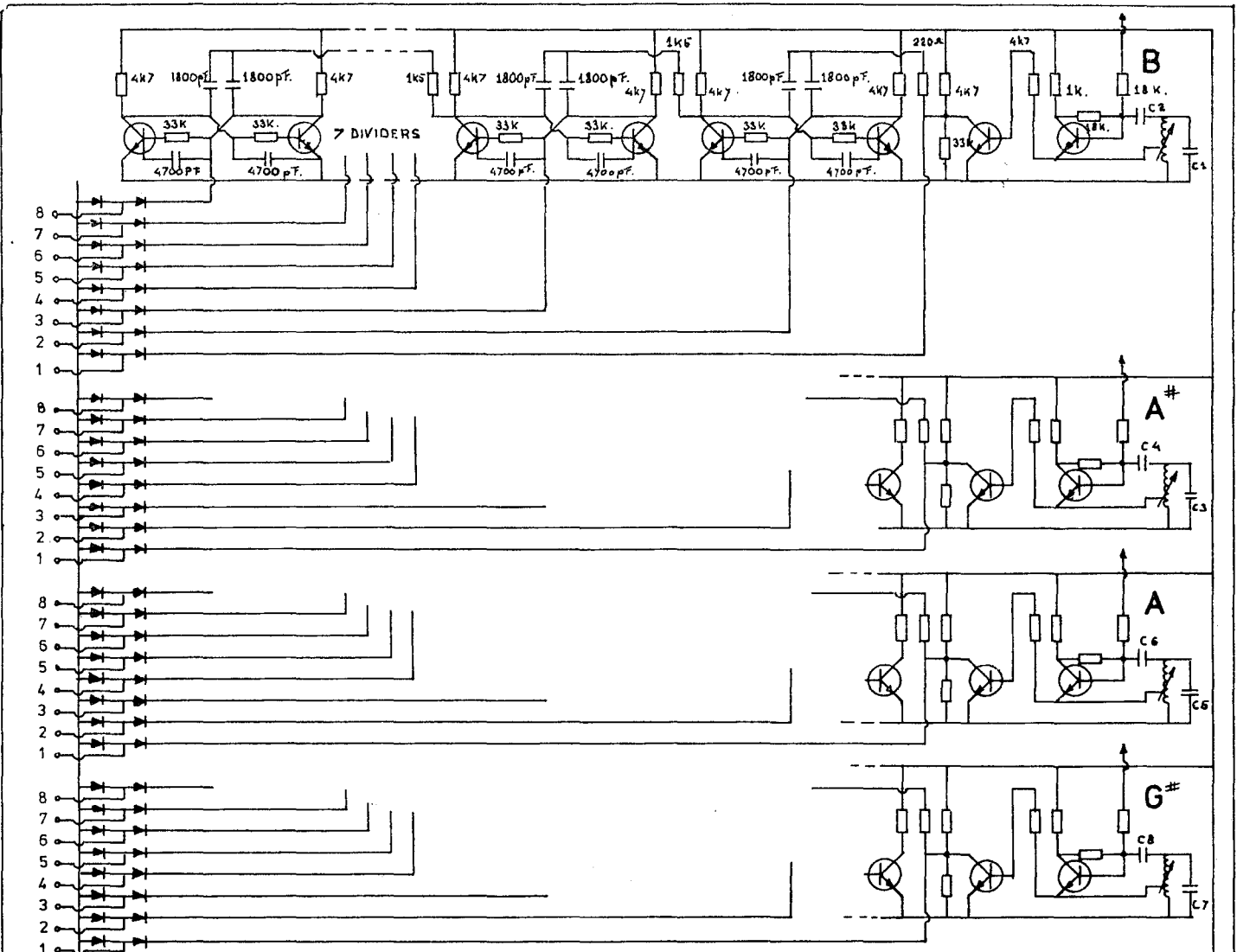
INDEX

- PAGE No 1 SIGNAL AND POWER BLOCK DIAGRAM
- " " 2 POWER SUPPLY
- " " 3 GENERATORS
- " " 4 KEYING SWITCHES UPPER, LOWER, AND PEDAL
- " " 5 PRE AMPS UPPER MANUAL
- " " 6 " " LOWER "
- " " 7 " " PEDAL AND MIXTUUR
- " " 8 FILTER CIRCUITS UPPER MAN. AND PEDAL
- " " 9 FILTER CIRCUITS LOWER MANUAL
- " " 10 " " LOWER " AND PEDAL
- " " 11 ECHO CIRCUIT
- " " 12 STOP CIRCUIT CONNECTIONS TO AMPLIFIERS
- " " 13 AMPLIFIER CIRCUIT
- " " 14 ADJUSTMENTS
- " " 15 MAIN CONNECTIONS

SIGNAL AND POWER BLOCKDIAGRAM				
DATE:	DESIGN	DRAWN	MODIFIED	
6.12.74	JVERSTEEGT	Ⓢ		
				JOHANNUS ORGEL
				TYPE: K-11B
ELECTRONIUM				PAGE No
TUINSTRAAAT 10.				1
COPYRIGHT: J. VERSTEEGT VEENENDAAL HOLLAND. (TEL. 08385-10220)				



POWER SUPPLY				JOHANNUS ORGEL	
DATE	DESIGN	DRAWN	MODIFIED	TYPE: K-II	
24.6.71	J.VERSTEEGT.	[Signature]		K-II B H-II B	
ELECTRONIUM				PAGE NO	
COPY RIGHT: J.VERSTEEGT.				2	
TUNSTRAAT 10, VEENENDAAL. TEL: 08385 - 10280.					

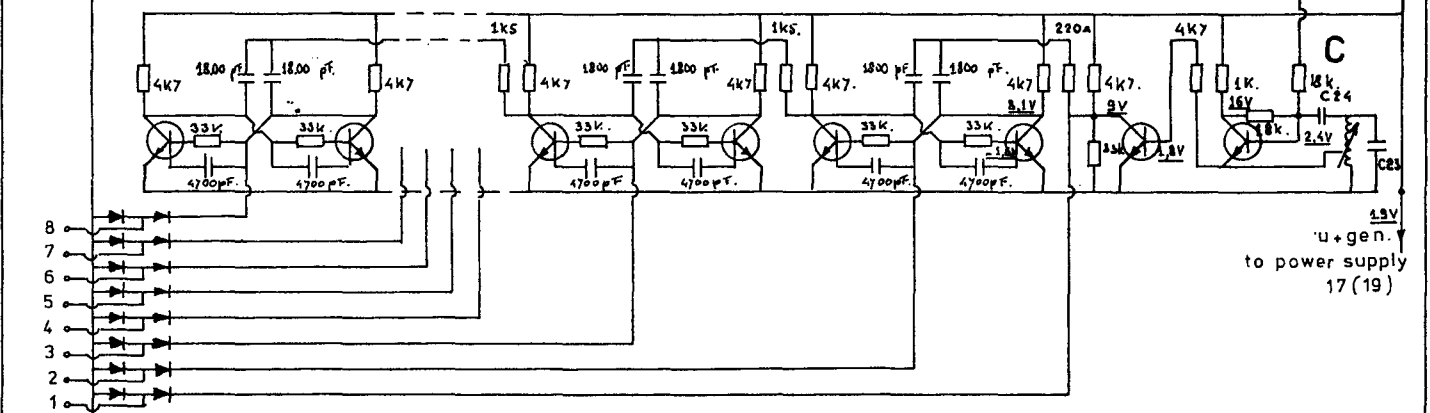


TO KEYING CIRCUITS

- C 1 = 10.000 pF.
- C 2 = 12.000 pF.
- C 3 = 15.000 pF.
- C 4 = 15.000 pF.
- C 5 = 15.000 pF.
- C 6 = 15.000 pF.
- C 7 = 15.000 pF.
- C 8 = 18.000 pF.
- C 9 = 15.000 pF.
- C 10 = 18.000 pF.
- C 11 = 18.000 pF.
- C 12 = 18.000 pF.
- C 13 = 22.000 pF.
- C 14 = 22.000 pF.
- C 15 = 22.000 pF.
- C 16 = 22.000 pF.
- C 17 = 27.000 pF.
- C 18 = 27.000 pF.
- C 19 = 27.000 pF.
- C 20 = 33.000 pF.
- C 21 = 33.000 pF.
- C 22 = 33.000 pF.
- C 23 = 33.000 pF.
- C 24 = 38.000 pF.

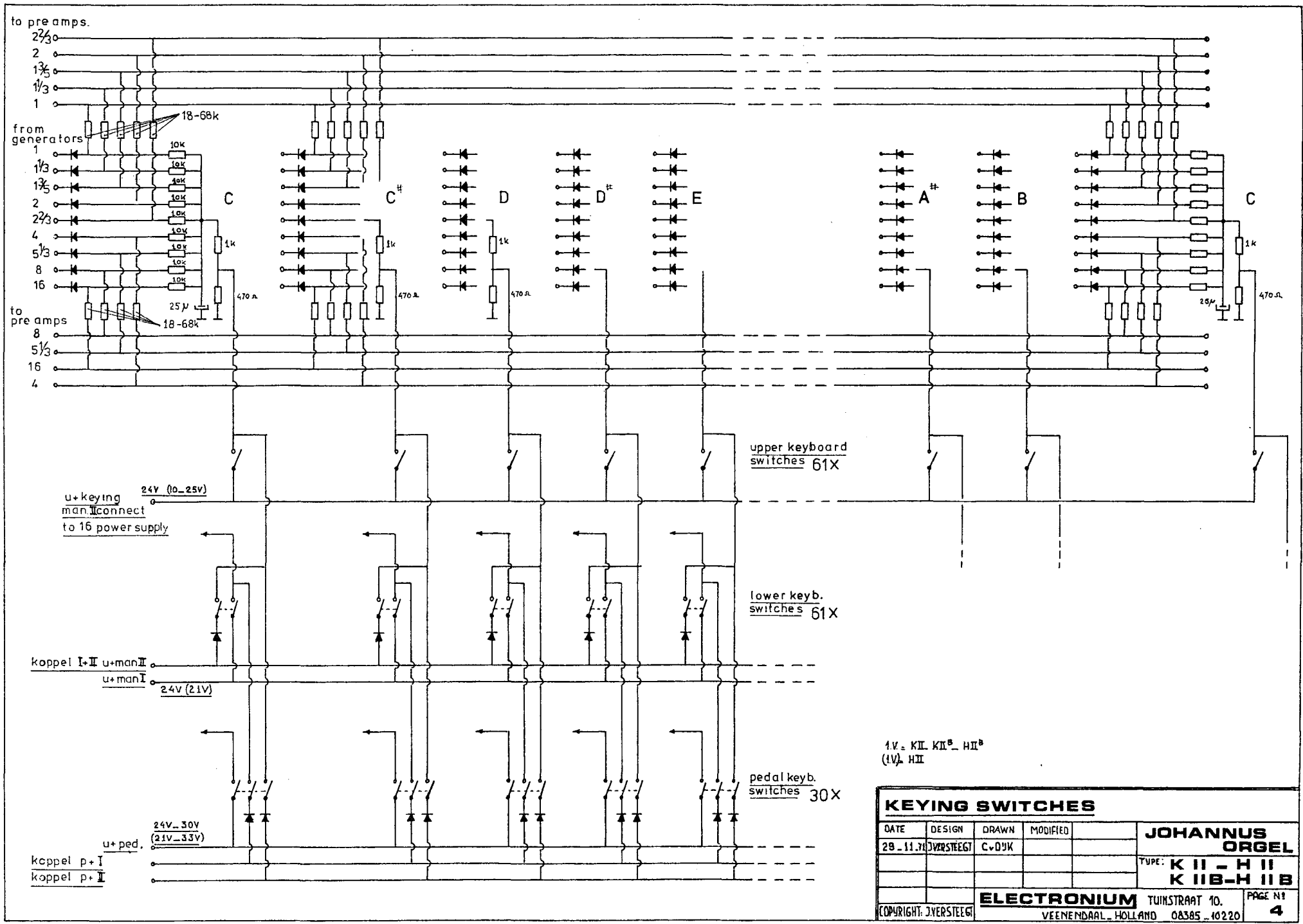
C# - G

VIBRATO LINE TO POWER SUPPLY 7 (11)



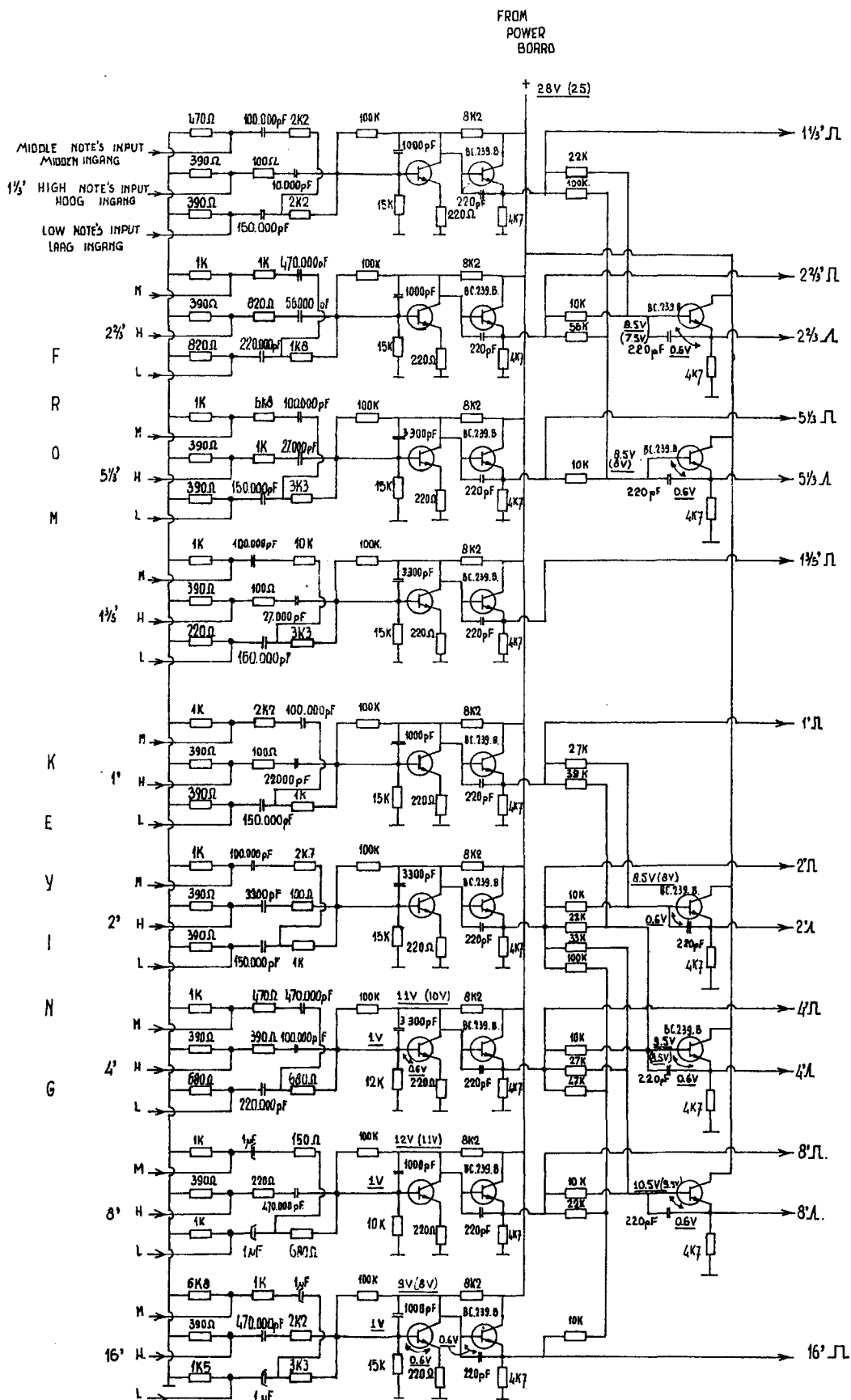
0.4V
0.64V diodes line power supply 18

GENERATORS AND DIVIDERS				
DATE	DESIGN.	DRAWN	MODIFIED	
2-11-71	J. VERSTEEGT	C. DUJK		JOHANNUS ORGEL
				TYPE K II - H II K IIB - H IIB
ELECTRONIUM TUIJSTRAAT 10, VEENENDAAL - HOLLAND 06585-40220				PAGE #1 3



1V = KII, KII^B, HII^B
(1V) HII

KEYING SWITCHES					JOHANNUS ORGEL
DATE	DESIGN	DRAWN	MODIFIED	TYPE:	
28-11-70	JVERSTEEGT	CvDJK			K II - H II K IIB-H IIB
ELECTRONIUM TUINSTRAAT 10.					PAGE N ^o 4
COPYRIGHT: JVERSTEEGT					VEENENDAAL, HOLLAND 08385-10220

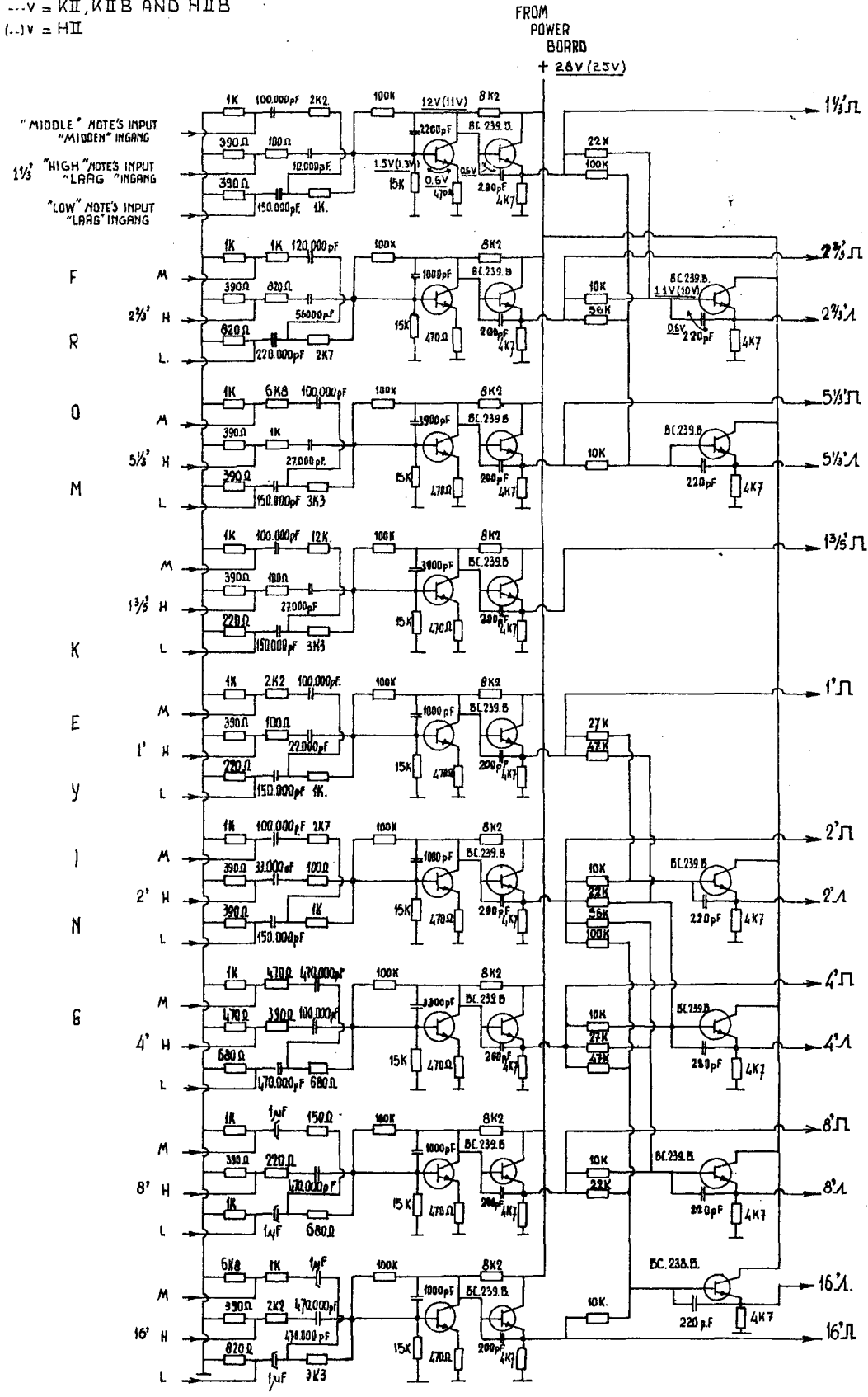


T
O
F
O
R
M
I
L
I
T
A
R
Y

 №
Jh 15h

PRE AMPS UPPER MANUAL				JOHANNUS ORGEL
DATE	DESIGN	DRAWN	MODIFIED	TYPE K II - H II K IIB.H IIB
4-5-71	J.VERSTEEGT	(S)		
ELECTRONIUM				PAGE № 5
COPYRIGHT : J. VERSTEEGT, TWINSTRAAT 10, VEENENDAAL, HOLLAND.				08330 - 10220

...V = KII, KIB AND HIB
 (...)V = HII

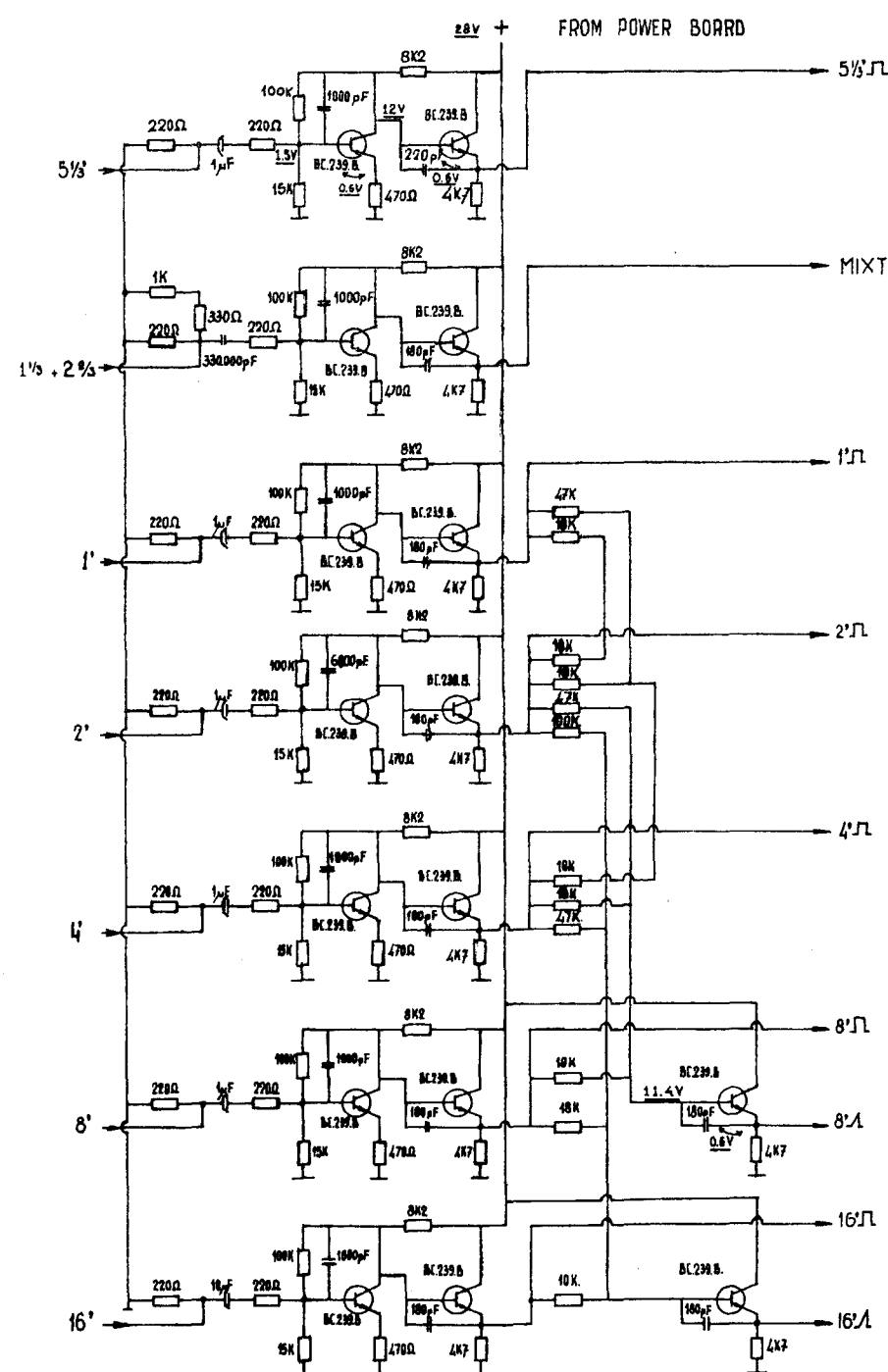


T
O
F
I
L
T
E
R
C
i
R
C
I
U
T
H
e
H
o 153
H
o 152

PRE AMPS LOWER MANUAL				
DATE	DESIGN	DRAWN	MODIFIED	JOHANNUS ORGEL
3.5.71	JVERSTEEGT			TYPE: K II - H II K IIB-H IIB
ELECTRONIUM				PAGE NO 6
COPYRIGHT: J. VERSTEEGT TUINSTRAT 10, VEENENDAAL, HOLLAND 06335 - 102 20				

F
R
O
M

K
E
Y
I
N
G



T
O

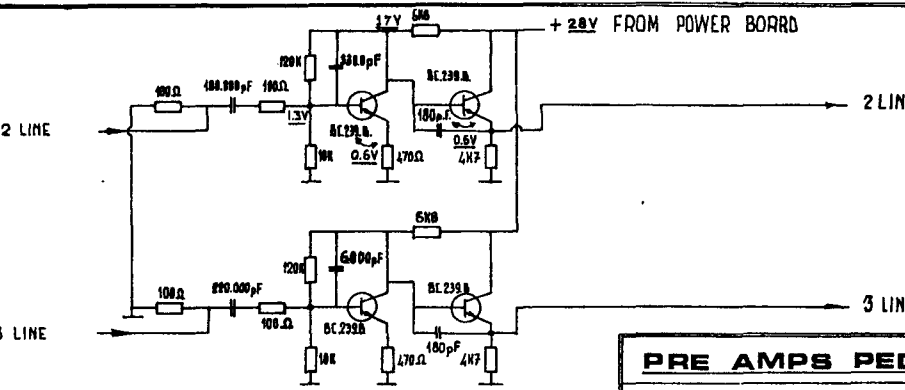
F
I
L
T
E
R
C
I
R
C
U
I
T

№: Jh 151
 Jh 150.

PRE AMP PEDAL

F
R
O
M

K
E
Y
I
N
G



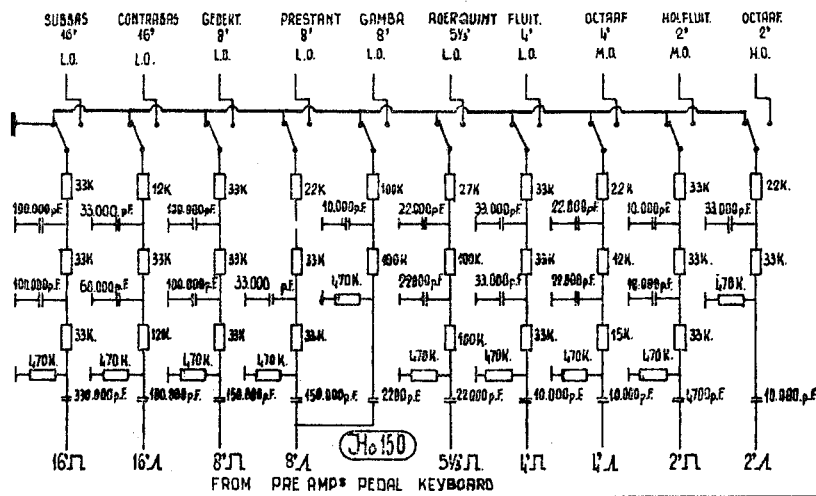
T
O

F
I
L
T
E
R
C
I
R
C
U
I
T

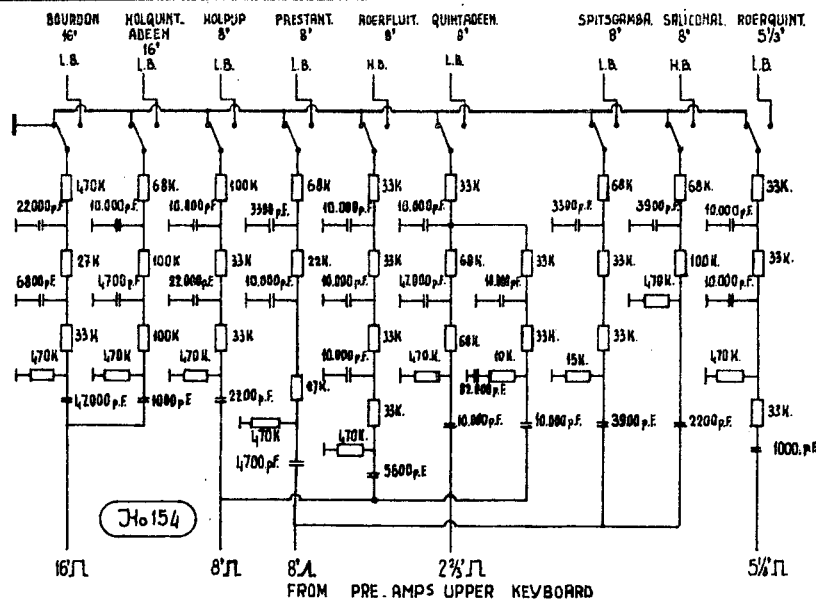
№: Jh 151
 Jh 152

PRE AMP MIXTUUR

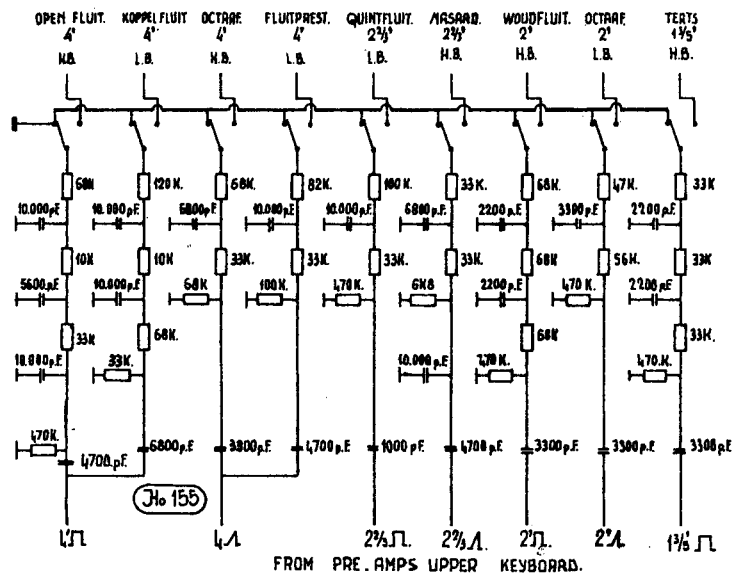
PRE AMPS PEDAL				
PRE AMPS MIXTUUR				
DATE	DESIGN	DRAWN	MODIFIED	JOHANNUS ORGEL
4-3-71	JVERSTEEGT.			TYPE: K II - K II B
ELECTRONIUM				PAGE NR 7
COPYRIGHT: J. VERSTEEGT. TUISSTRAAT 80, VEENENHORN, HOLLAND.				08385 - 10220



LOCATED
IN
LEFT
BOARD



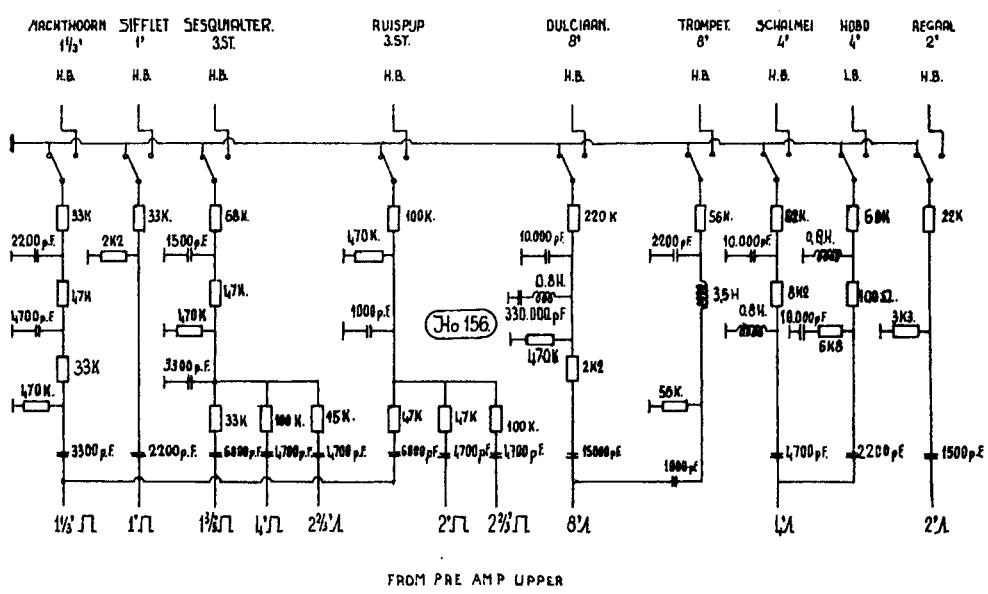
LOCATED
IN
RIGHT
BOARD



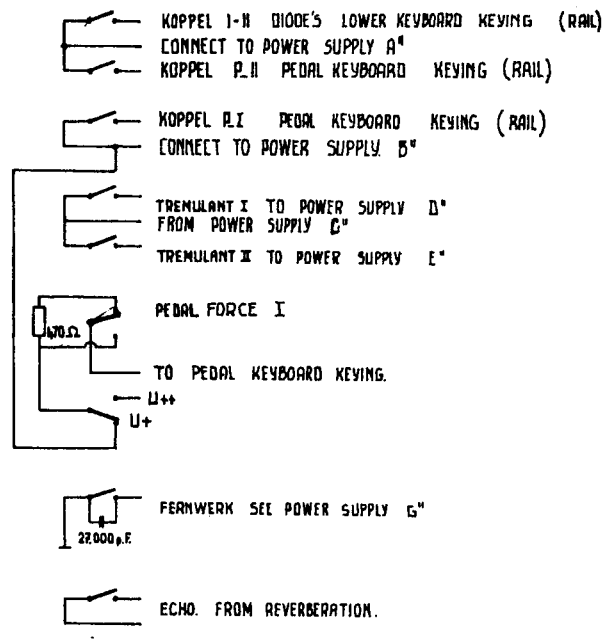
LOCATED
IN
RIGHT
BOARD.

- L.O. IS BASS AMPLIFIER.
- L.O. IS LAAG ONDER VERSTERKER.
- M.O. IS MIDDLE AMPLIFIER.
- M.O. IS MIDDEN ONDER VERSTERKER.
- H.O. IS TREBLE AMPLIFIER.
- H.O. IS HOOG ONDER VERSTERKER.
- L.B. IS BASS AMPLIFIER.
- L.B. IS LAAG BOVEN VERSTERKER.
- H.B. IS TREBLE AMPLIFIER.
- H.B. IS HOOG BOVEN VERSTERKER.

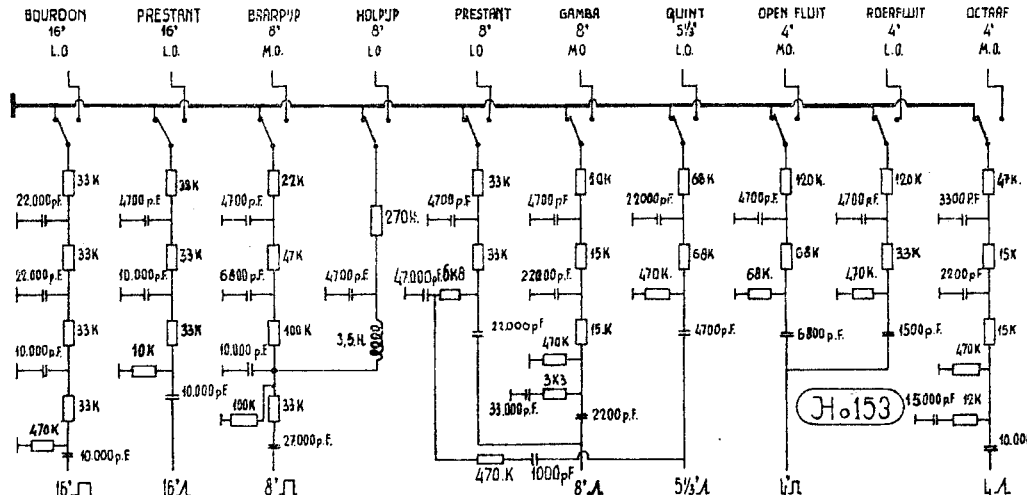
FILTER CIRCUITS				
DATE	DESIGN	DRAWN	MODIFIED	
14-5-74	J. VERSTEEGT	Ⓢ		
				JOHANNUS ORGEL
				TYPE: K II K IIB
ELECTRONIUM				PAGE NO
COPYRIGHT. J. VERSTEEGT. TUINSTRAT 40. VEENENDAAL. HOLLAND. TEL. 08385-10260				8



Ho 157

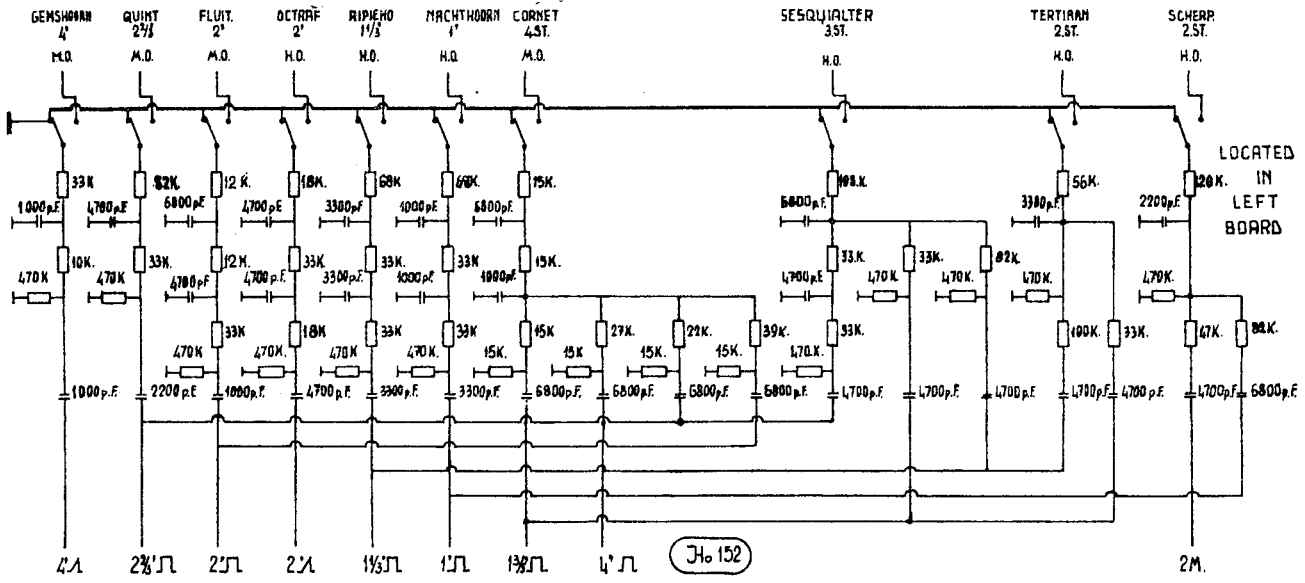


FILTER CIRCUITS AND SPEELHULPEN					
DATE	DESIGN	DRAWN	MODIFIED	JOHANNUS ORGEL	
17.5.71	J. VERSTEEGT	(Signature)		TYPE: K II K IIB	
				ELECTRONIUM	
COPYRIGHT J. VERSTEEGT				TUINSTRAT 10, VEENENDAAL, HOLLAND.	
					PAGE NO 9



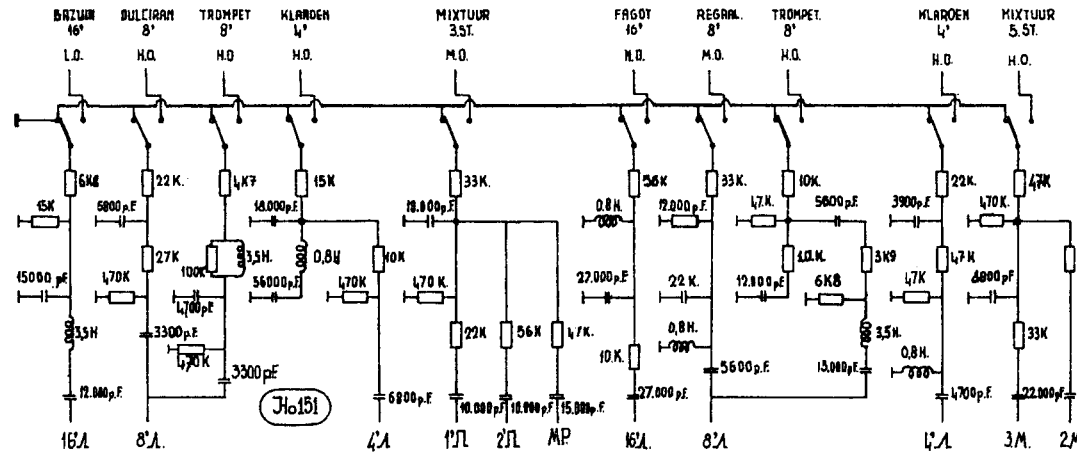
FROM PREAMPS LOWER KEYBOARD.

LOCATED IN LEFT BOARD



FROM PRE AMPS LOWER KEYBOARD

LOCATED IN LEFT BOARD

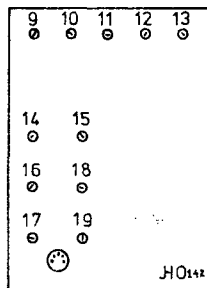


FROM PRE. AMPS MIXTUUR PEDAL AND LOWER KEYBOARDS

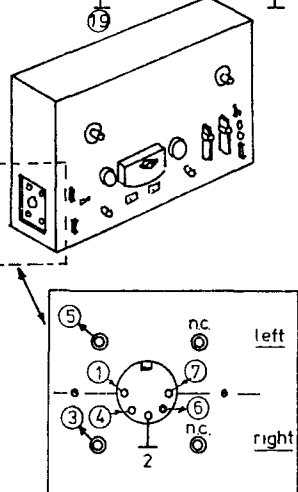
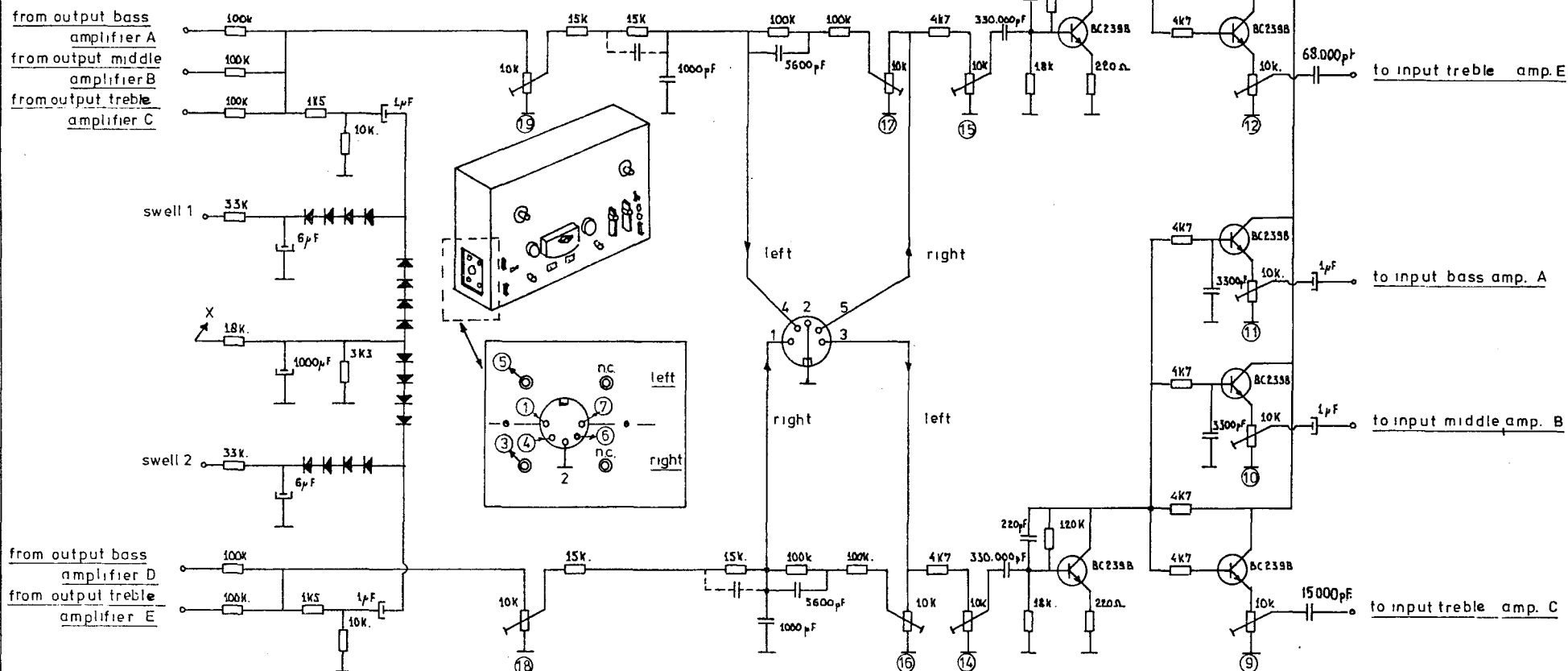
LOCATED IN LEFT BOARD

- M.O. 15 MIDDLE AMPLIFIER. B
- " " " MIDDEN ONDER VERSTERKER. B
- H.O. 15 TREBLE AMPLIFIER. C
- " " " HOOG ONDER VERSTERKER. C
- L.O. 15 BASS AMPLIFIER. A
- " " " LAAG ONDER VERSTERKER. A

FILTER CIRCUITS				JOHANNUS ORGEL
DATE	DESIGN	DRAWN	MODIFIED	
12.5.71	J.VERSTEEGT	JVB		TYPE: K-II K-II B
ELECTRONIUM				PAGE NO. 10
COPYRIGHT. J.VERSTEEGT. TUINSTRAAT 10, VEENENDAAL, HOLLAND. TEL. 06385-10220.				



- 9 = internal echo out to bass amplifier A
- 10 = " " " middle " B
- 11 = " " " treble " C
- 12 = " " " bass " D
- 13 = " " " treble " E
- 14 = " " time man. I_ pedal
- 15 = " " man. II
- 16 = external " man I_ pedal
- 17 = " " man II
- 18 = input from man II
- 19 = " " man I pedal



- 1 = to rec. in right
- 2 = ground
- 3 = rec. out left
- 4 = to rec. in left
- 5 = rec out right
- 6 = rec out extern left
- 7 = rec out extern right

ECHO CIRCUIT				JOHANNUS ORGEL
DATE	DESIGN	DRAWN	MODIFIED	
7-12-71	J. VERSTEEG	Cv DUK		TYPE:
				K-IIB H-IIB
COPYRIGHT: J. VERSTEEG				ELECTRONIUM TUINSTRAAT 10
VEENENDAAL - HOLLAND (68385-40226)				PAGE NO 11

MANUAL I

1	2	3	4	5	6	7	8	9	10
		M ⁰			M ⁰		M ⁰		M ⁰
L ⁰	L ⁰		L ⁰	L ⁰		L ⁰		L ⁰	

MANUAL II

41	42	43	44	45	46	47	48	49
				H ^B				
L ^B	L ^B	L ^B	L ^B		L ^B	L ^B	L ^B	L ^B

MANUAL I

11	12	13	14	15	16	17	18	19	20
			H ⁰	H ⁰	H ⁰		H ⁰	H ⁰	H ⁰
M ⁰	M ²	M ²				M ²			

MANUAL II

50	51	52	53	54	55	56	57	58
H ^B		H ^B			H ^B	H ^B		H ^B
			L ^B	L ^B			L ^B	

PEDAL

MANUAL I

21	22	23	24	25	26	27	28	29	30
	H ⁰	H ⁰	H ⁰				H ⁰	H ⁰	H ⁰
L ⁰				M ⁰	M ⁰	M ⁰			

MANUAL II

59	60	61	62	63	64	65	66	67
H ^B	H ^B	H ^B	H ^B	H ^B	H ^B	H ^B		H ^B
							L ^B	

PEDAL

SPEELHULPEN

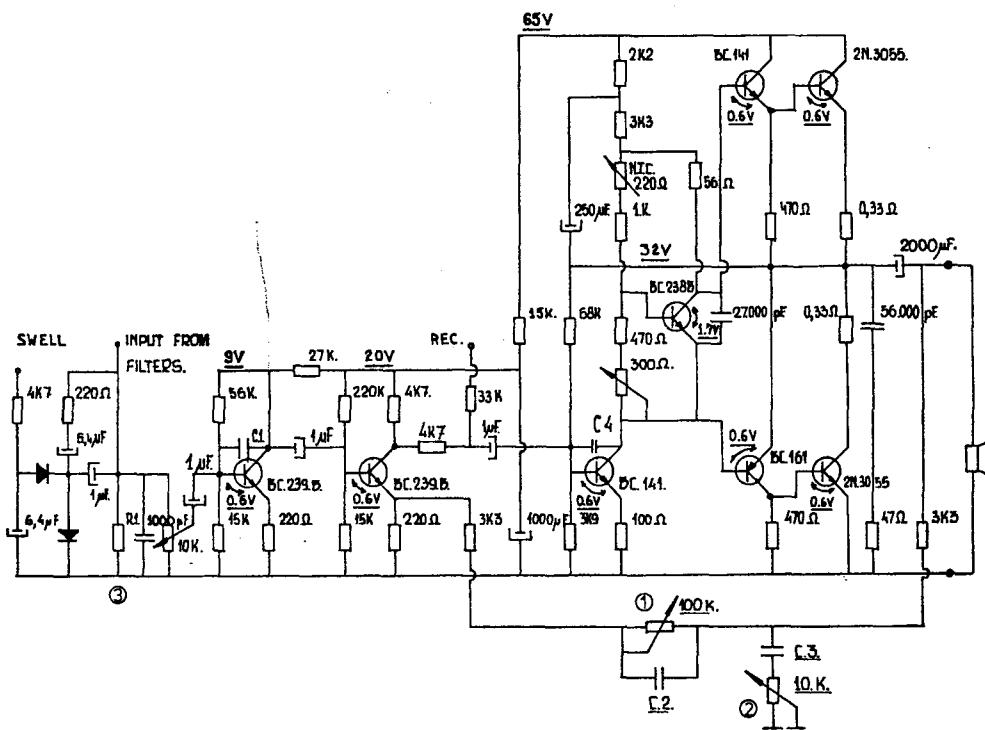
31	32	33	34	35	36	37	38	39	40
							M ⁰	M ⁰	M ⁰
L ⁰	L ⁰	L ⁰	L ⁰	L ⁰	L ⁰	L ⁰			

68	69	70	71	72	73	74	75	76

L⁰ = BASS AMP. A.
M⁰ = MIDDLE AMP. B.
M² = MIDDLE² AMP. C.
H⁰ = TREBLE AMP. D.
L^B = BASS AMP. E.
H^B = TREBLE AMP. F.

LOWER MANUAL
UPPER MANUAL

STOP CIRCUIT CONNECTIONS				
DATE:	DESIGN:	DRAWN:	MODIFIED:	JOHANNUS ORGEL
6.12.71	VERSTEEGT	Ⓢ		TYPE K-II B
ELECTRONIUM				TJINSTRAAT 10, VEENENDAAL - HOLLAND. (08385-10220)
COPYRIGHT: J. VERSTEEGT.				PAGE NO 12



A: BASS AMPLIFIER
 C1. = 4700 pF
 C2. = 100.000 pF
 C3. = 330000 pF
 C4. = 6800 pF
 R1. = 10K

E: BASS AMPLIFIER
 C1. = 470 pF
 C2. = 6800 pF
 C3. = 150.000 pF
 C4. = 3300 pF
 R1. = 10K

B: MIDDLE¹ AMPLIFIER
 C1. = 470 pF
 C2. = 68.000 pF
 C3. = 100.000 pF
 C4. = 1000 pF
 R1. = 10K

F: TREBLE AMPLIFIER
 C1. = 470 pF
 C2. = 68.000 pF
 C3. = 47.000 pF
 C4. = 470 pF
 R1. = 10K

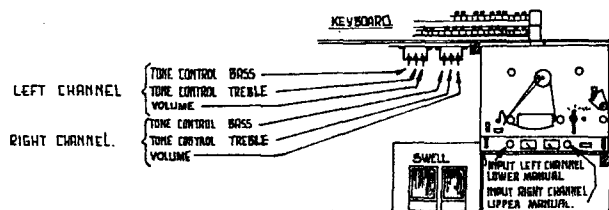
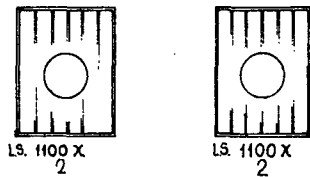
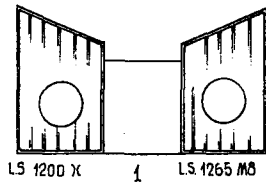
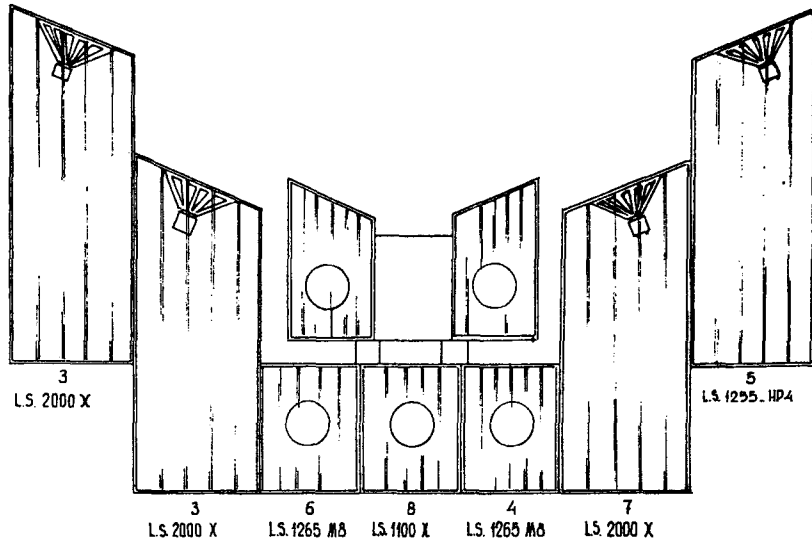
C: MIDDLE² AMPLIFIER
 C1. = 22.00 pF
 C2. = 68.000 pF
 C3. = 100.000 pF
 C4. = 1000 pF
 R1. = 15 K

G: REVERBERATION AMPLIFIER
 C1. = 470 pF
 C2. = 68.000 pF
 C3. = 82.000 pF
 C4. = 3300 pF
 R1. = -

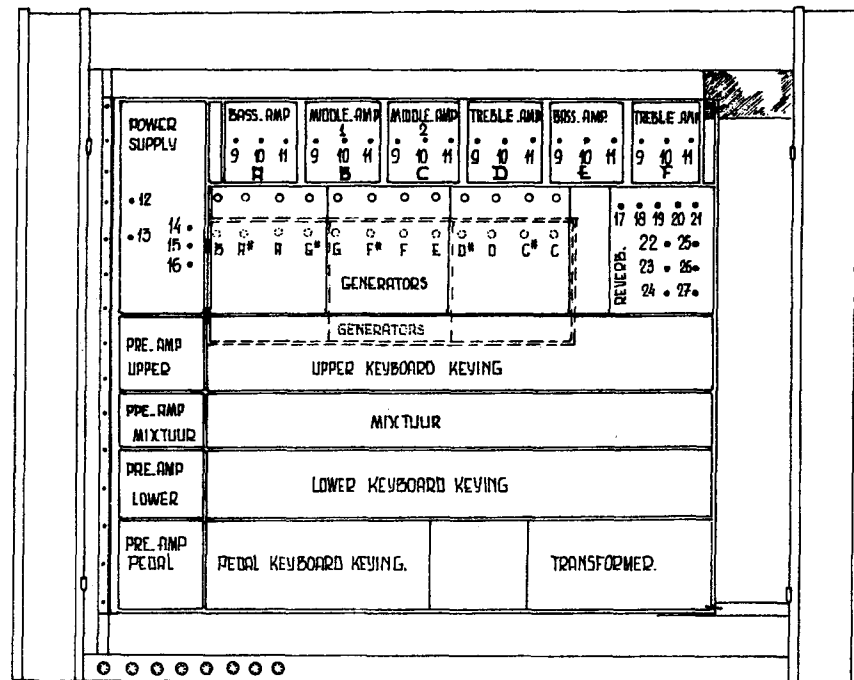
D: TREBLE AMPLIFIER
 C1. = 3300 pF / 47 K Ω
 C2. = 68000 pF
 C3. = 47.000 pF
 C4. = 470 pF
 R1. = 10K

H: REVERBERATION AMPLIFIER
 C1. = 470 pF
 C2. = 68.000 pF
 C3. = 82.000 pF
 C4. = 3300 pF
 R1. = -

AMPLIFIER CIRCUIT					JOHANNUS ORGEL
DATE:	DESIGN:	DRAWN	MODIFIED		
6.12.71	J. VERSTEEGT	C. D. V. K.			TYPE: K-IIB
ELECTRONIUM					TUINSTRAAT 10, VEENENDAAL, HOLLAND 06386.19820
COPYRIGHT: J. VERSTEEGT.					PAGE NO: 13



DETAIL REVERBERATION AMPLIFIERS AND RECORDER.

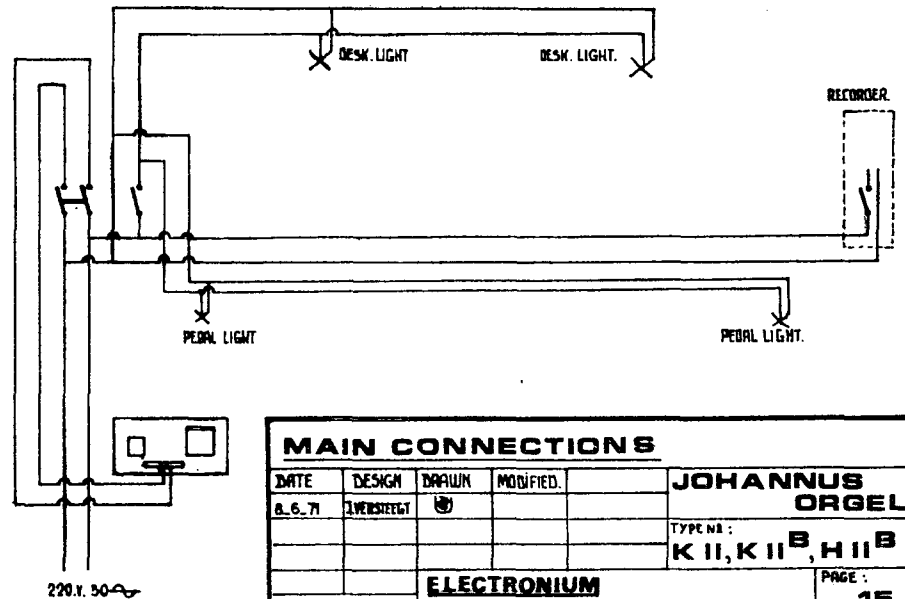
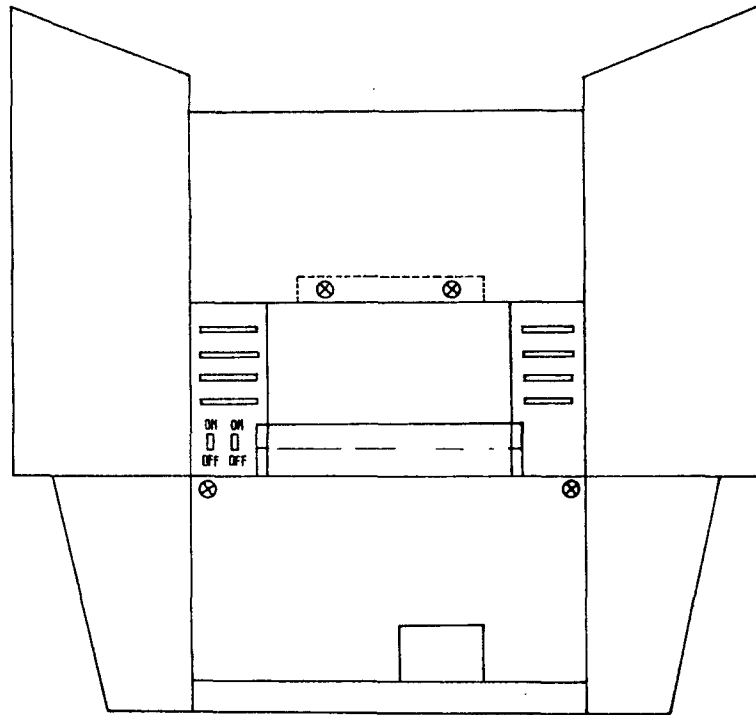
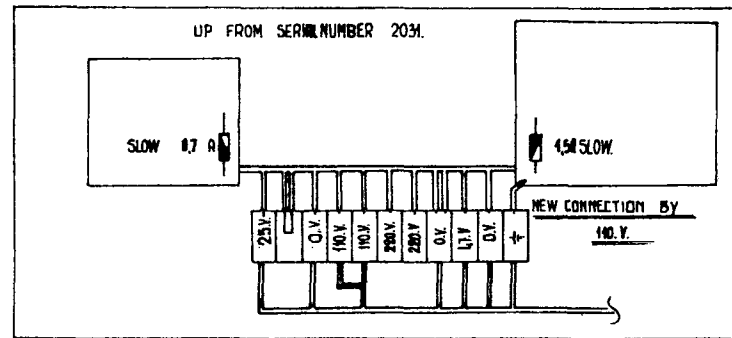
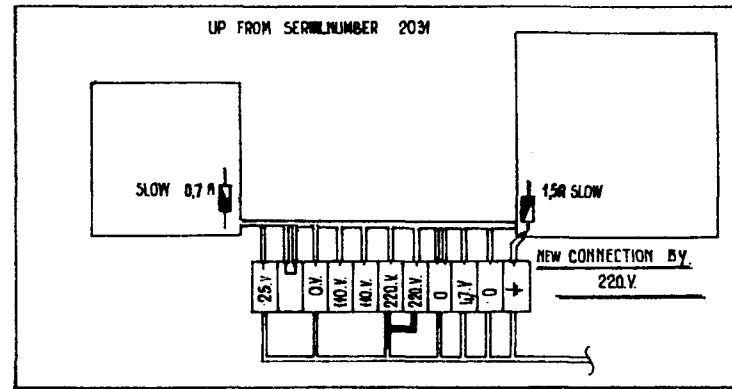
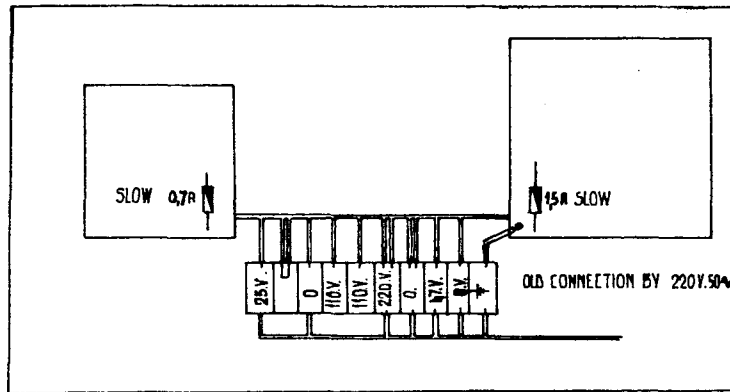


1 2 3 4 5 6 7 8
FW NG L M¹ M² H L H

- 1. FW : FEEDBACK
- 2. NG : REVERBERATION
- 3. L : BASS AMPLIFIER (A)
- 4. M¹ : MIDDLE AMPLIFIER (B)
- 5. M² : MIDDLE AMPLIFIER (C)
- 6. H : TREBLE AMPLIFIED (D)
- 7. L : BASS AMPLIFIER (E)
- 8. H : TREBLE AMPLIFIER (F)
- 9 VOLUME CONTROL
- 10 TONE CONTROL TREBLE
- 11 TONE CONTROL BASS
- 12 CHORUS SPEED
- 13 TREMOLO SPEED
- 14 CHORUS DEPTH
- 15 TREMOLO I DEPTH
- 16 TREMOLO II DEPTH
- 17 TO INPUT TREBLE AMP (F)
- 18 TO INPUT BASS AMP (E)
- 19 TO INPUT TREBLE AMP (D)
- 20 TO INPUT MIDDLE AMP (B)
- 21 TO INPUT BASS AMP (A)
- 22 INTERNAL VOLUME TREBLE AMPLIFIED, MIDDLE AND BASS AMP (A,B,D)
- 23 INPUT VOLUME UPPER MANUAL
- 24 INPUT VOLUME LOWER MANUAL
- 25 INPUT TREBLE AMPLIFIER AND BASS AMPLIFIER (E,F)
- 26 AND 27: EXTERNAL ECHO TIME.

ADJUSTMENTS

DATE:	DESIGN:	DRAWN:	MODIFIED:	JOHANNUS ORTEL
1.12.71	IJVERSTEEGT	⊗		
				TYPE: K-11B
ELECTRONIUM				TUINSTRAAT 10
COPYRIGHT: IJVERSTEEGT				VEERENDAAI HOLLAND (TEL 08385-10226)
				PAGE NO 14



MAIN CONNECTIONS				
DATE	DESIGN	DRAWN	MODIFIED	JOHANNUS ORGEL
8.6.71	1VERSTREET	⊕		TYPE NO: K II, K II ^B , H II ^B
				ELECTRONIUM
COPYRIGHT: 1VERSTREET, TURNSTRANT RD, HEERHIDAL, HOLLAND. TEL. 06.385.102.20.				PAGE: 15